

| Company Profile

PT AWINA RIKUDENKO SOLAR ENGINEERING INDONESIA

ARISE



PT AWINA RIKUDENKO SOLAR ENGINEERING INDONESIA

ARISE

PAGE OF CONTENTS

Page of Contents	2
Introduction of Rikudenko's Solar Power Plant	3
About the Company	4
Introducing the Board Members	5
Company Organization Chart	6
Reference I: Joint Research Cooperation Supported by ARISE	7
Reference II: About Rikudenko	9
Reference III: Rikudenko's Renewable Energy Projects	10
Reference IV: About AWINA	11
Reference V: Board Members Work Record	12
Reference VI: ARISE Gallery	13





• Maseguchi, Toyama Prefecture (1,500 kW), operated since April 2014

RIKUDENKO'S SOLAR POWER PLANT



• Kairyu, Toyama Prefecture (2,999 kW), operated since April 2014

ABOUT THE COMPANY

PT AWINA RIKUDENKO SOLAR ENGINEERING INDONESIA (ARISE) is a joint venture company between an Indonesian company and two Japanese company which was officially established on April 7th 2023. ARISE offers leasing of solar power generation equipment.

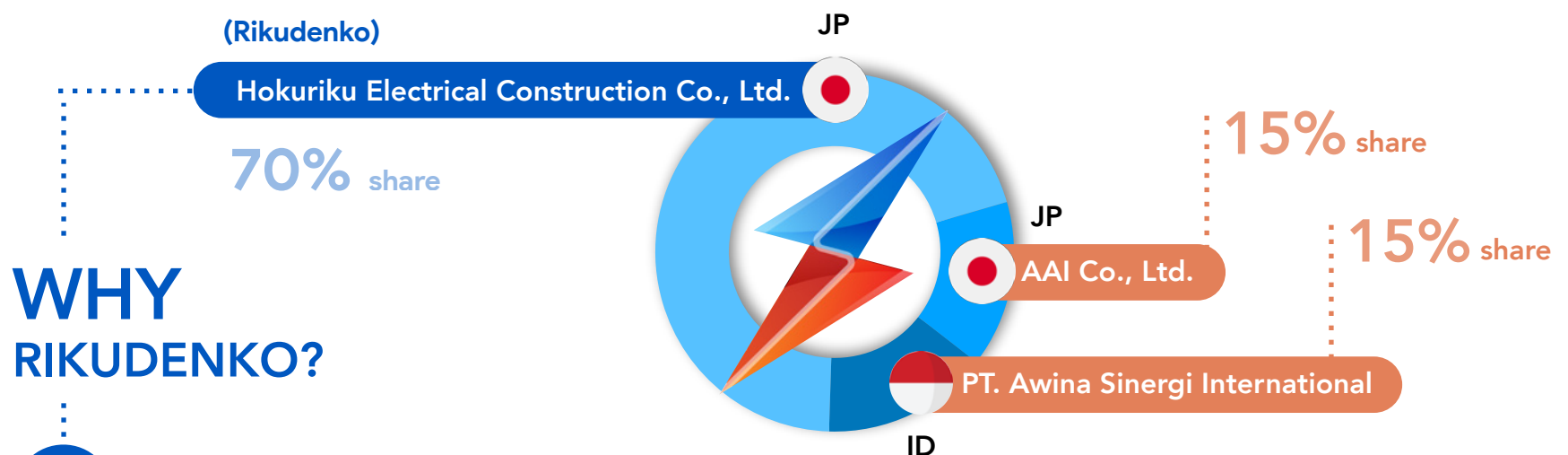
ARISE AIM

ARISE will contribute to the Republic of Indonesia's renewable energy policy and maximize resources to contribute and realize the country's steps towards carbon neutral.

ARISE TAGLINE

“YOU CAN COUNT ON US”

ARISE HOLDINGS



WHY RIKUDENKO?



78 years of experience in the **Electrical Construction** field



Renewable Energy Power Generation in Japan
4 Solar Power Plant and 1 Hydroelectric Power Plant ^{※1}



- 567 Solar Power Plant construction in Japan (2012~2022)
- Installed many major electrical components for Biomass and Wind Power Plant (excluding generators).



Working with new and **advanced technology**



New Technology Development Center



4430 qualifications (3.3 qualifications/employee)

OUR LOCATION



※1 Hydroelectric power plant is still under construction and not yet operating

INTRODUCING THE BOARD MEMBERS

SASAKI Akito

Board of Director of ARISE

General Manager of Planning Department, Business Strategy Research Section
Hokuriku Electrical Construction Co., Ltd.



KITA Katsuhiko

Board of Director of ARISE

Senior Managing Director*
Hokuriku Electrical Construction Co., Ltd.



Ananda Setiyo Ivannanto

Board of Director of ARISE

President and Representative Director
PT. Awina Sinergi International



YAMAZAKI Isashi

Board of Commissioner of ARISE

President and Representative Director*
Hokuriku Electrical Construction Co., Ltd.



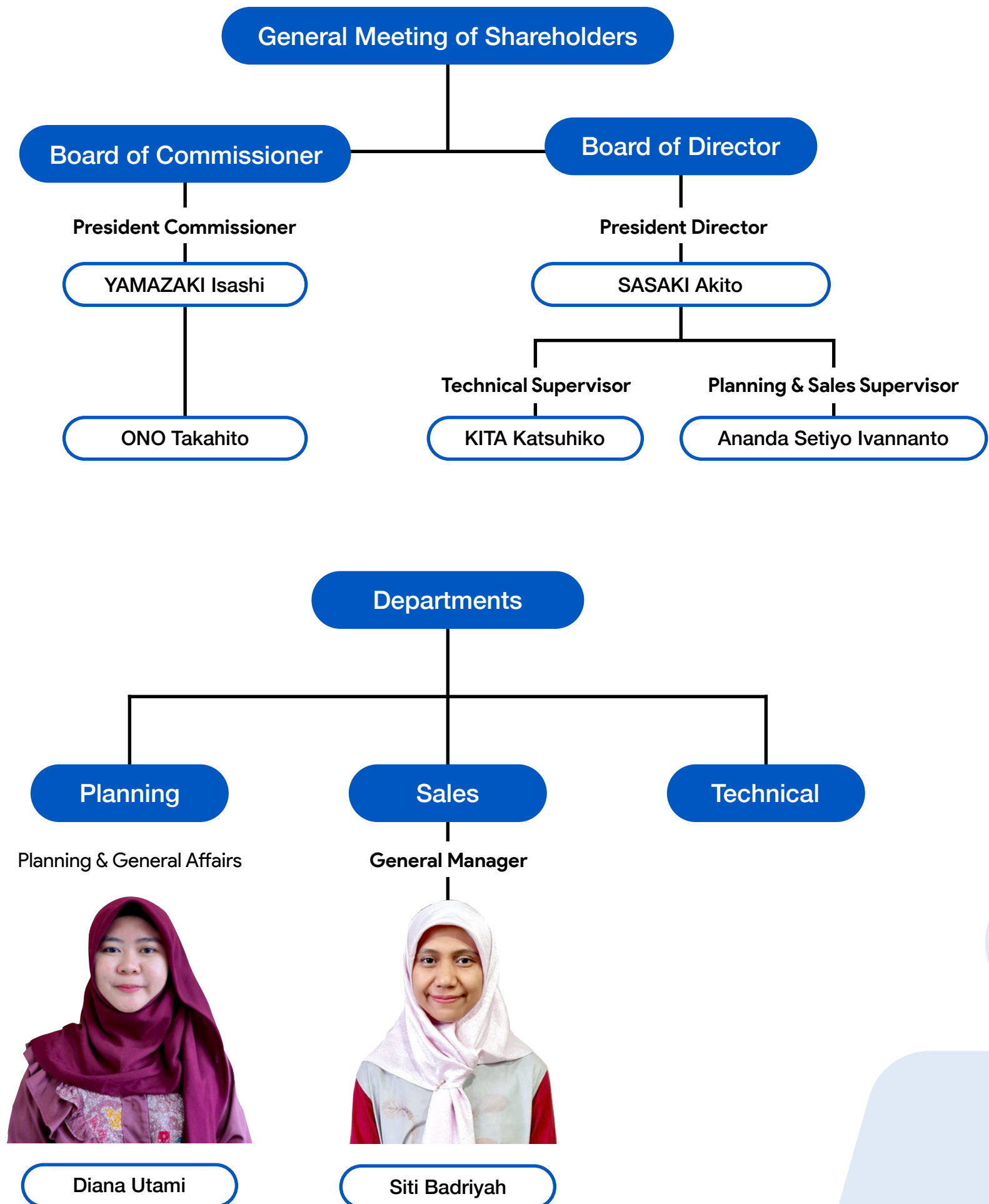
ONO Takahito

Board of Commissioner of ARISE

President and Representative Director
AAI Co., Ltd.

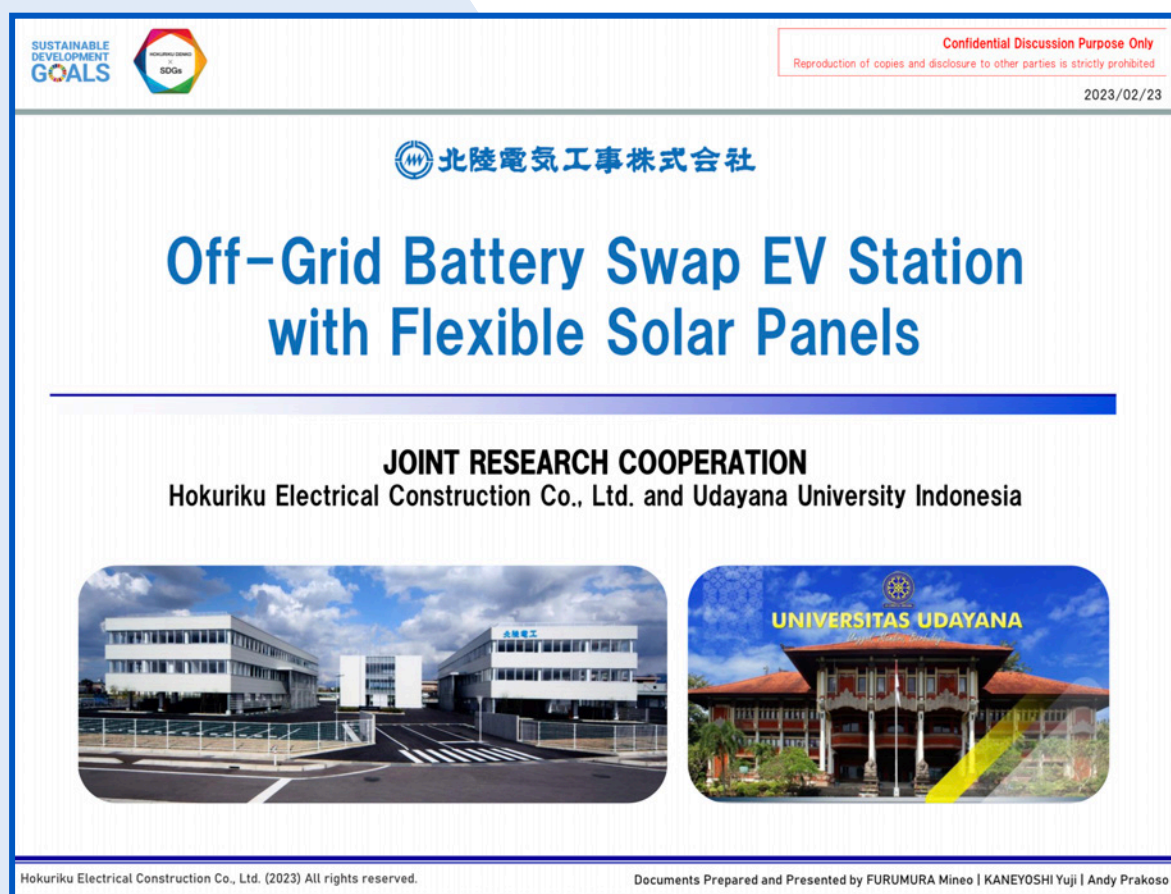


COMPANY ORGANIZATION CHART



JOINT RESEARCH COOPERATION SUPPORTED BY ARISE

Rikudenko and AWINA is currently running a joint research project with a national university in Indonesia — Udayana University. ARISE, on behalf of Rikudenko and AWINA, is supporting on field inspection and supervision of the project.



Theme of the Joint Research Cooperation



Joint Research MoA Signing Ceremony on February 23rd, 2023



Discussion on the Implementation of the Joint Research at Udayana University



On Field Inspection at Udayana University with the Joint Research Team

ABOUT RIKUDENKO



北陸電気工事株式会社

Company Name	Hokuriku Electrical Construction Co., Ltd. (Rikudenko)
Date of Establishment	October 1, 1944
Address	Konaka 269, Toyama City, Toyama Prefecture
Capital Stock	3.3 Billion Yen (IDR 366 Billion)
Net Sales (FY 2022)	44.8 Billion Yen (consolidated) (IDR 4.7T)
Number of Employees	1323 person (2023/04/01)
Number of Qualifications	4430 qualifications (2023/06/01)
Qualifications per Person	3.3 qualifications/employee
Public Market	Prime Market (Securities Code: 1930)

BRANCH OFFICE

TOYAMA

- Head Office
- Toyama Branch Office
- Takaoka Branch Office
- Niikawa Branch Office

ISHIKAWA

- Kanazawa Branch Office
- Nanao Branch Office
- Komatsu Branch Office

FUKUI

- Fukui Branch Office
- Tsuruga Branch Office

OSAKA

- Osaka Branch Office

TOKYO

- Tokyo Branch Office

AICHI

- Nagoya Branch Office

FIRST OVERSEAS BUSINESS IN INDONESIA

Established on April 2023.



RIKUDENKO'S RENEWABLE ENERGY PROJECTS

Rooftop Solar Power Plant

Location: Konaka, Toyama Prefecture

Capacity: 200 kW



Fixed Tilt Mounting Solar Power Plant

Location: Joganji, Toyama Prefecture

Capacity: 600 kW



Fixed Tilt Mounting Solar Power Plant

Location: Kairyu, Toyama Prefecture

Capacity: 2,999 kW



Fixed Tilt Mounting Solar Power Plant

Location: Maseguchi, Toyama Prefecture

Capacity: 1,500 kW



Hydroelectric Power Plant

Location: Konomoto, Fukui Prefecture

Capacity: 660 kW

ABOUT AWINA

PT Awina Sinergi International is a Japanese-Indonesia Joint Venture established under the law of Indonesia, which is engaged in the business development and consultation of SDG's solutions to support Indonesia Net Zero Emission target, especially in the field of renewable energy, waste management, carbon neutral and business services.

Company Name	PT. Awina Sinergi International (AWINA)
Date of Establishment	February 14, 2018
Address	SME Tower 6th Floor, Jl. Jend. Gatot Subroto Kav. 94, Jakarta, Indonesia
Capital Stock	IDR 10.5 Billion

AWINA'S RENEWABLE ENERGY PROJECTS

#1

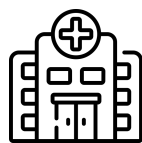
Installation of **small hybrid off-grid micro wind turbine and solar PV system** across Indonesia since 2010



University
Research



School



Hospital



Remote
Areas

#2

Project Team for **1 MW Rooftop Solar PV** of
Smart Parking Gelora Bung Karno Jakarta
for ASEAN GAMES 2018



BOARD MEMBERS

WORK RECORD



SASAKI Akito

1979	Hokuriku Electric Power Co., Ltd.	
2012	Hokuriku Electrical Construction Co., Ltd.	
	[Toyama Branch]	General Manager of Sales Department
2018	[Head Quarter]	General Manager of Sales Department
2020	[Head Quarter]	Executive Manager of Business Development
2022	[Head Quarter]	General Manager of Planning Department (Business Strategy Research Section)



KITA Katsuhiko

1984	Hokuriku Electrical Construction Co., Ltd.	
2015	[Tokyo Branch]	Executive Vice Branch Manager
2018	[Head Quarter]	Director Manager of Indoor Wiring Department
2020	[Head Quarter]	Senior Executive Manager of Indoor Wiring Department
2021	[Head Quarter]	Managing Director
2023	[Head Quarter]	Senior Managing Director



Ananda Setiyo Ivannanto

2010	A-WING International Co., Ltd.	
	[Representative Office - Logistics Japan]	
2013	PT AWINA SINERGI INDONESIA	President and Representative Director
2018	PT AWINA SINERGI INTERNATIONAL	President and Representative Director
2018	AAI Co., Ltd.	Director



YAMAZAKI Isashi

1985	Hokuriku Electrical Construction Co., Ltd.	
2018	[Takaoka Branch]	Executive Vice Branch Manager
2019	[Head Quarter]	Director of Management Department
2020	[Head Quarter]	Senior Executive Manager of Planning Department
2021	[Head Quarter]	Managing Director
2023	[Head Quarter]	President and Representative Director



ONO Takahito

2012	A-WING Co., Ltd. [Establishment]	Director
2014	A-WING Co., Ltd.	President and Representative Director
2018	A-WING International Co., Ltd.	President and Representative Director
2019	AAI Co., Ltd.	Director
2021	AAI Co., Ltd.	President and Representative Director

ARISE GALLERY

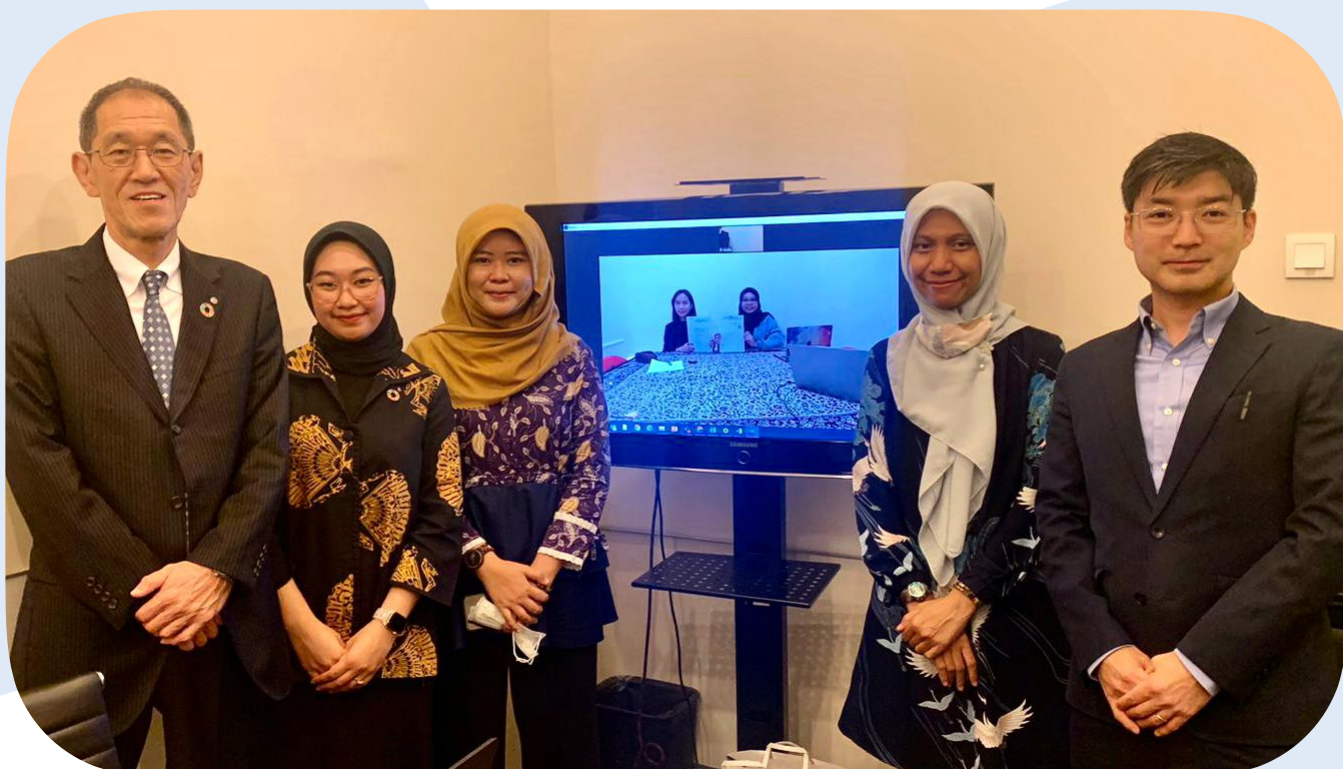
December 7th, 2022



Joint Venture Agreement Signing Ceremony

(L-R Above Row) AWINA - Diana, Hirayama, AAI - Nakamura; President Director of PT. Awina Sinergi International - Ananda Setiyo Ivannanto, President Director of Hokuriku Electrical Construction Co., Ltd. - YANO Shigeru; President Director of AAI Co., Ltd. - ONO Takahito; AWINA - Siti; Rikudenko - Yamazaki, Ajeng, Sasaki
(L-R Below Row) AWINA Members

April 3rd, 2023

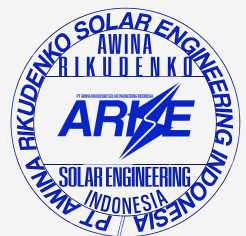


ARISE Deed of Establishment Signing Ceremony

(L-R) President Director of ARISE - SASAKI Akito; Rikudenko - Ajeng Larasati, Planning Staff of ARISE - Diana Utami;
Sales GM - Siti Badriyah; TMI Law Office Attorney - SAITO Eisuke



PT AWINA RIKUDENKO SOLAR ENGINEERING INDONESIA
YOU CAN COUNT ON US.



SME Tower 16th Floor
Jl. Jend. Gatot Subroto Kav. 94, Pancoran,
South Jakarta 12780
INDONESIA